

Three-Piece High Pressure Ball Valve, Sizes 1/2" ~ 2"



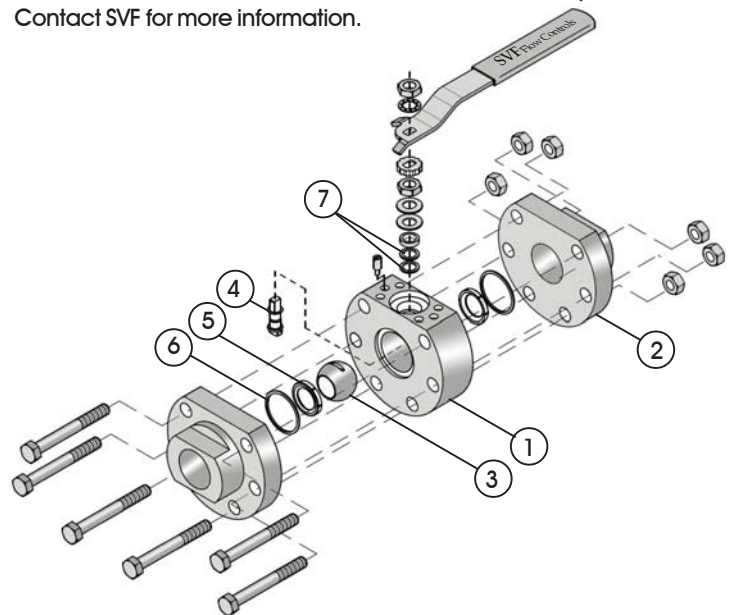
The SVF Series H7 Standard Port high pressure ball valve is designed to meet applications up to 6,000 psi. This engineered valve features a Carbon or Stainless Steel Body and is available in a variety of alloy materials. The H7 adds safety and reliability to high pressure systems and applications in Offshore, Oil & Gas, Petrochemical, Power and Refining.

SERIES H7 DESIGN FEATURES

- ✓ High pressure to 6,000 psi
- ✓ Live-loaded stem packing ensures seal-tight pressure containment even under thermal cycling
- ✓ Three-piece "swing out" design offers easy access for in-line maintenance
- ✓ Standard seat material is Delrin®
- ✓ Blowout proof stem adds safety & reliability
- ✓ Stainless Steel fasteners and handle



The Series H7 Ball Valve is available with additional options. Contact SVF for more information.



MATERIALS OF CONSTRUCTION

ITEM	DESCRIPTION	MATERIALS SPECIFICATIONS (Additional options available)
1	Body	Carbon Steel (ASTM A105), Stainless Steel (ASTM A479 SS316L)
2	End Connector	Carbon Steel (ASTM A105), Stainless Steel (ASTM A479 SS316L)
3	Ball	316 Stainless Steel (ASTM A351 CF8M)
4	Stem	Stainless Steel 17-4 ph (ASTM A564 630)
5	Seat	Delrin®, PEEK
6	Body Seal	Buna "N", Viton®, EPDM
7	Stem Seal	SupraLon™

SPECIFICATION STANDARDS OF COMPLIANCE

SVF Series H7 Ball Valves are available in designs that meet the following Industry Standards:

- ANSI
- DIN
- BPE
- ASME
- ISO
- NACE
- API
- MSS
- ASTM

Contact SVF for specific applications

What do you need today?™

HIGH PURITY
CleanFLOW
 www.CleanFLOW.net

PRO-SPEC
 PROCESS SPECIFIC
 WWW.PRO-SPEC.NET

QUALITY FLOWS
 THROUGH US

Specifications subject to change. Please visit www.SVF.net for the latest updates on this Data Sheet. All Data Sheets posted on our website supersede all prior publications. [Document #DDS-H7-06/2010 • Series H7 Data Sheet - 06/08/2010]

www.SVF.net

SVF Flow Controls, Inc. • 13560 Larwin Circle • Santa Fe Springs, CA 90670 • Tel: 1.800.783.7836 • FAX: 562.802.3114
 Sales@SVF.net • Visit our website: www.SVF.net • © SVF Flow Controls, Inc. • Specifications subject to change without notice



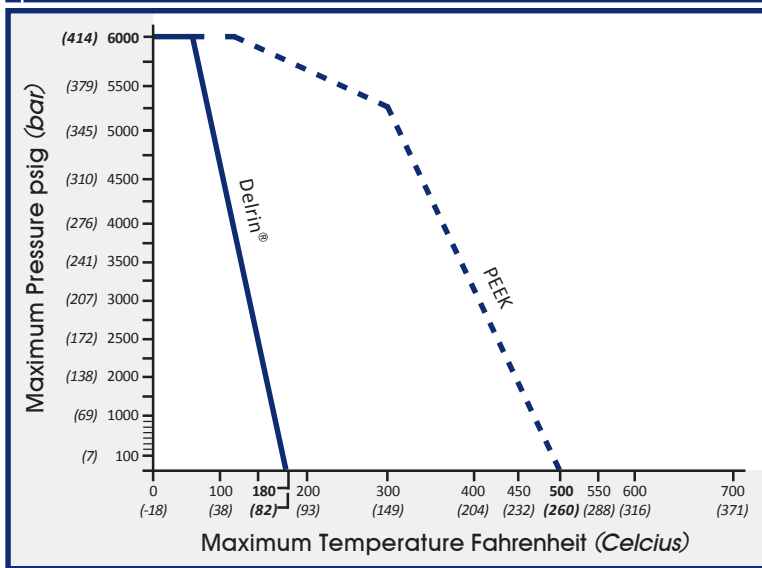
Three-Piece High Pressure Ball Valve, Sizes 1/2" ~ 2"



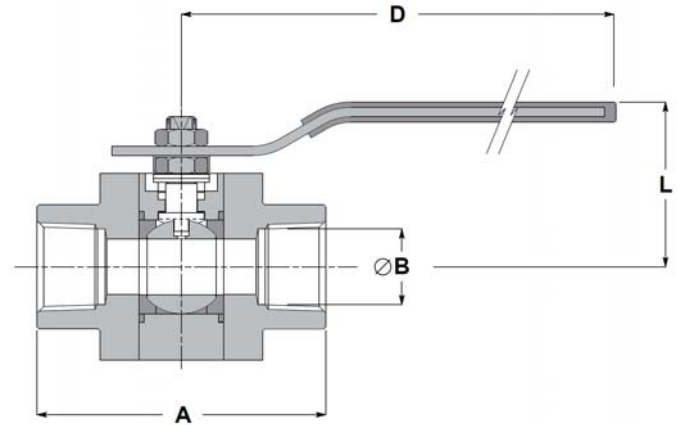
DIMENSIONS, WEIGHT, C_v, TORQUE

Size	A		B		D		L		Weight.		C _v	Torque*	
	in.	mm	in.	mm	in.	mm	in.	mm	lbs	kg		in-lb _f	Nm
1/2"	2.78	71	0.44	11	5	127	1.8	46	3.5	1.6	8	60	7
3/4"	3.48	88	0.56	14	5	127	1.9	48	5.3	2.4	12	200	23
1"	3.69	94	0.81	21	6	152	2.4	61	9.9	4.5	32	300	34
1-1/2"	5.04	128	1.25	32	11	279	3.2	81	20.9	9.5	80	550	62
2	6.14	156	1.50	38	11	279	3.3	84	28.9	13.1	104	1100	124

H7 - PRESSURE/TEMPERATURE CHART



* At full differential pressure for clean fluids with Delrin® Seats



HOW TO ORDER SERIES H7 BALL VALVES

SERIES	BODY & END MATERIAL	BALL & STEM MATERIAL	SEAT	BODY SEAL	ENDS	SIZE
H7 = Standard Port	44 = Carbon Steel ASTM A105 66 = Stainless Steel ASTM A479 SS316L	6M = 316 Stainless Steel ASTM A351 CF8M Ball 17-4ph ASTM A564 630 Stem	D = Delrin® K = PEEK	B = Buna "N" V = Viton® E = EPDM	SE = Screwed Ends (FNPT) SW = Socket Weld Ends	05 = 1/2" 07 = 3/4" 10 = 1" 15 = 1-1/2" 20 = 2"

Order Example: (H7666MDBSE05)

Example Description:

316L Stainless Steel Body & Ends, 316 Stainless Steel Ball, 17-4ph Stem, Delrin® Seat, Buna "N" Body Seal, Screwed Ends (FNPT), 1/2" Size

H7	66	6M	D	B	SE	05
----	----	----	---	---	----	----

Specifications subject to change. Please visit www.SVF.net for the latest updates on this Data Sheet. All Data Sheets posted on our website supersede all prior publications • [Document #DDS-H7-06/2010 • Series H7 Data Sheet - 06/08/2010]